

Splashback

U104320-01

Fitting

Please read all of this instruction before installing the splashback.

The manufacture disclaims all liabilities for any damage or injury caused as a result of not following this instruction leaflet.

This splashback is designed to fit behind a 1100mm wide cooker. The wall should be flat and clear of any obstructions.

Take care, the splashback is heavy and we recommend at least two people should fit it. Beware of sharp edges.

Before drilling the wall check that there are no electrical cables or pipe work in the wall in the fixing areas. The splashback should be fitted after the cooker has been installed and before an extractor hood is fitted.

The splashback is supplied with plastic edge strips. These can be fitted to the vertical edges to help close gaps if the splashback is fitted to a slightly uneven wall. Push the strips back to touch the wall

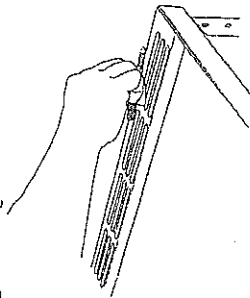
To Fit the Splashback

You will need the following equipment to complete the splashback installation satisfactorily

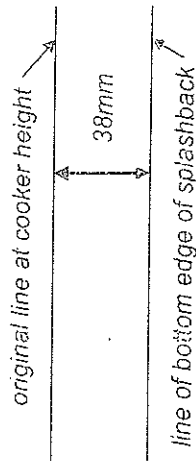
- A pencil or marker
 - A rule
 - A drill
 - A 7mm masonry drill
 - A cross point screwdriver
 - If it is necessary to fix to a hollow construction plaster or partition wall you will need special plaster board fixing screws or plugs.
- In order to fit the splashback at the

correct height the cooker must first be installed, set to the correct height and levelled.

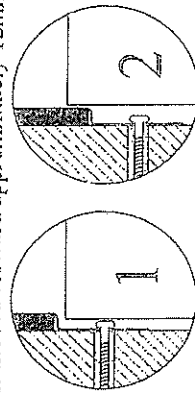
Mark the wall behind the cooker at the flue grille height.



Move the cooker forward. Measure down 38mm from the your marks and draw a line.

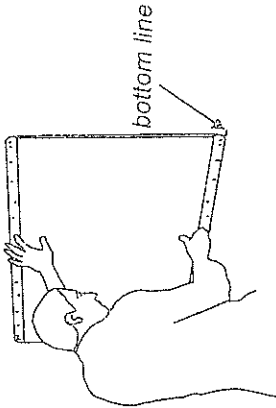


This dimension will position the splash plate as shown in 1. If it is required to mount the splashback lower as in 2 be aware that this will mean that the cooker is moved forward approximately 12mm.



NB a cooker hood must be at least 650mm above the cooker.

Hold the splashback in position with bottom edge level with the lower line.



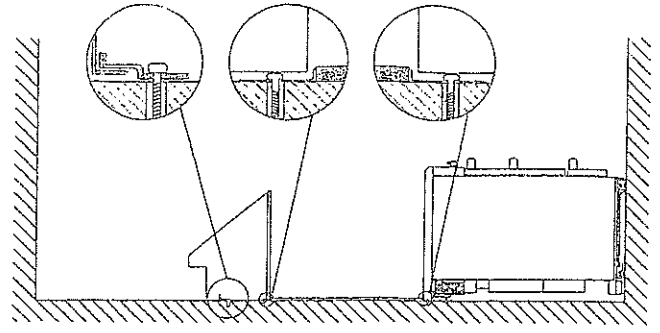
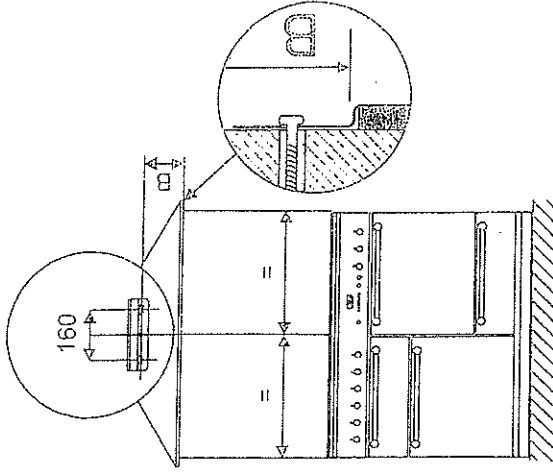
Mark the position of the fixing holes on the wall. The vertically slotted holes in the splashback are intended for screw fixing.

At least 6 screws must be used to hold the splashback, 3 at the top and 3 at the bottom.

Remove the splashback and drill the wall using a 7mm masonry bit. Screw the splashback in position using the rawl plugs and screws provided.

Please note

When fitting a cooker hood with the splashback the datum line for measurement should be taken from the folded top edge of the splashback (see the figure) **not** the dimension H as shown in the hood installation instructions. The cooker hood must be at least 650mm above the cooker



Care of your Splashback

Cleaning

NEVER USE PAINT SOLVENTS, WASHING SODA, CAUSTIC CLEANERS, BIOLOGICAL POWDERS, BLEACH, CHLORINE BASED BLEACH CLEANERS, COARSE ABRASIVES OR SALT.

Enamelled Splashback

The vitreous enamelled surface can normally be cleaned using clean hot water and a liquid detergent. For any stubborn stains use a nylon scouring pad or a well moistened soap pad. Aerosols can be used but the product **MUST** be suitable for enamel surfaces and the manufacturers instructions **MUST** be followed.

Stainless steel Splashback

For best results use a liquid detergent, e.g. Domestos Multi Surface Cleaner. **Avoid using any abrasive cleaners including cream cleaners, e.g. Cif, on brushed Stainless Steel surfaces.**